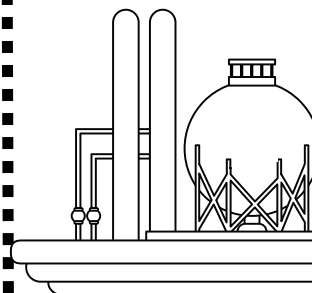
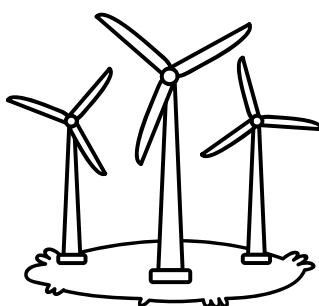
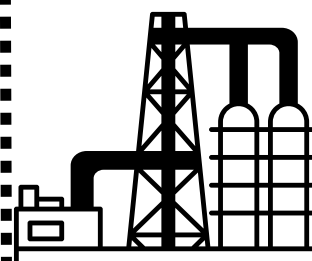
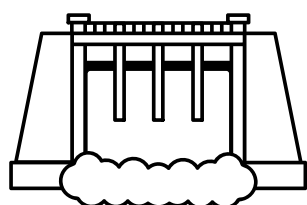
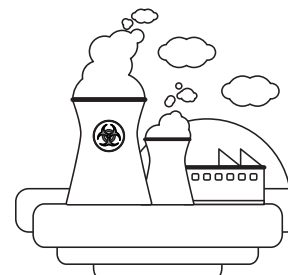
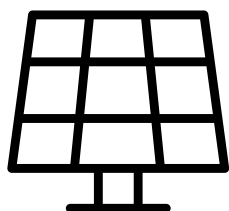
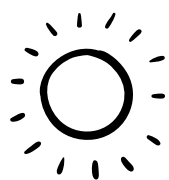


# Produção de energia

Renovável

Não renovável



DOBRA

DOBRA

DOBRA

DOBRA

DOBRA

DOBRA

Recorte as palavras a seguir:

Usina solar

Usina Eólica

Usina Hidrelétrica

Usina Nuclear

Combustíveis fósseis

Gás natural

DOBRA

CORTA